

VILLAGE SHUTTLE

WHAT SHUTTLE ROUTE DO I TAKE?

ACCOMMODATIONS	ROUTE
5 Aspenwood Condos	5
Base Village Lodging: Capitol Peak, Hayden Lodge, Lighthouse, Lumin, One Snowmass, Tree House	1 2 3 4 8
25 Chamonix (by request)	2
36 Country Club Townhomes	3
26 Crestwood Condos	2
37 Deerbrook Townhomes (by request)	6
27 Enclave, The	2
38 Homestead, The	4 8
4 Interlude Condos	5
3 Laurelwood Studio Suites	5
19 Lichenhearth Condos	1 2 3 8
Mall Lodging: Westin, Wildwood, Pokolodi, Snowmass Inn & Mountain Chalet	1 2 3 4 5 6 8
Meadow Rd/Sinclair Rd (by request)	8
42 Owl Creek Townhomes	3
10 Pokolodi Lodge	1 2 3 8
29 Ridge Condos, The (by request)	6
32 Seasons Four Condos	1
15 Shadowbrook Condos	1 2 3 8
35 Snowmass Club	3
11 Snowmass Inn	1 2 3 8
12 Snowmass Mountain Chalet	1 2 3 8
33 Snowmass Villas	4
31 Snowmass Mountain Condos	1
6 Sonnenblick Townhomes	5
17 Stonebridge Condos	1 2 3 8
16 Stonebridge Inn	1 2 3 8
20 Tamarack	1 2 3 8
14 Terracehouse Condos	1 2 3 8
28 Timbers Club	6
2 Timberline Condos	5
1 Top of the Village	5
39 Viceroy Snowmass	2
34 Villas at Snowmass Club	3
8 Westin Snowmass Resort	5
7 Wildwood Snowmass Hotel	5
13, 18 Willows Condominiums	1 2 3 8
30 Woodbridge Condos	1
24 Woodrun Place (by request)	2
22, 23 Woodrun V, Phase 1, 2, 3 (by request)	2

WHEN IS MY BUS ARRIVING?

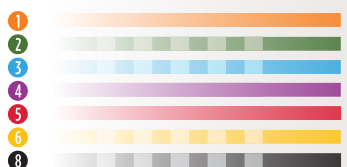
For full schedules: SnowmassTransit.com
[Google.com/transit](https://www.google.com/transit)

SHUTTLE HOURS

6:45 a.m. - 12:45 a.m.
The Shuttle runs every 10 minutes between Snowmass Mall and Snowmass Center.



Service Routes



Dashed lines indicate call for service: 970.923.3500

Accommodations

RFTA
Regional Bus Service to Aspen, Basalt, El Jebel, Carbondale and Glenwood Springs

← To Aspen (5 mi) via Hwy. 82 → Downvalley to Glenwood (35 mi) via Hwy. 82

HOW OFTEN DOES THE SHUTTLE RUN?

For more information: 970.923.2543 or SnowmassTransit.com

ROUTE	FIRST MALL DEPARTURE	LODGE DEPARTURE TIMES												FREQUENCY	MALL DEPARTURE TIMES												LODGE DEPARTURE TIMES	MALL DEPARTURE TIMES	LAST MALL DEPARTURE																
		6 AM	7	8	9	10	11	12 PM	1	2	3	4	5		6	7	8	9	10	11	12 AM	1	2																						
Woodbridge 1	6:30 AM	30 min												15 min	:00 :15 :30 :45												30 min	:08 :38	:00 :30	Call*	11:00 PM														
Crestwood 2	6:35 AM	:00 :20 :40												20 min	:15 :35 :55															Call*	10:15 PM														
Snowmass Club 3	6:35 AM	:05 :20 :35 :50												15 min	:05 :20 :35 :50												30 min	:05 :35	:20 :50	Call*	11:20 PM														
Town Park/Rodeo Lot 4	6:30 AM	20 min												10 min	:00 :10 :20 :30 :40 :50												20 min	Use Route 8														Call*	6:20 PM		
Top of the Village 5	6:55 AM	:17 :37 :57												20 min	:15 :35 :55																Call*	8:55 PM													
Ridge Condos/Mtn View 6	7:00 AM	Call 970.923.3500												20 min	:00 :20 :40																Call*	8:40 PM													
Crossings 8	7:05 AM	:15 :45												30 min	:05 :35												:15 :45	:05 :35	Call*		11:05 PM														
Dial-a-Ride High Mountain Taxi	8:00 AM	8:00 am to 9:00 pm - Call 970.923.3030 \$1 cash per person																																											9:00 PM
Late Night High Mountain Taxi	12:45 AM	Daly Lane Depot 12:45 am - 2:00 am \$1 cash Per Person																																											2:00 AM
Aspen via RFTA	6:15 AM	30 min												15 min	:00 :15 :30 :45												30 min	:15 :45					2:15 AM												

*Call 970.923.3500 for rides until 12:45